

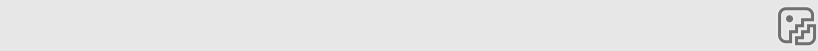
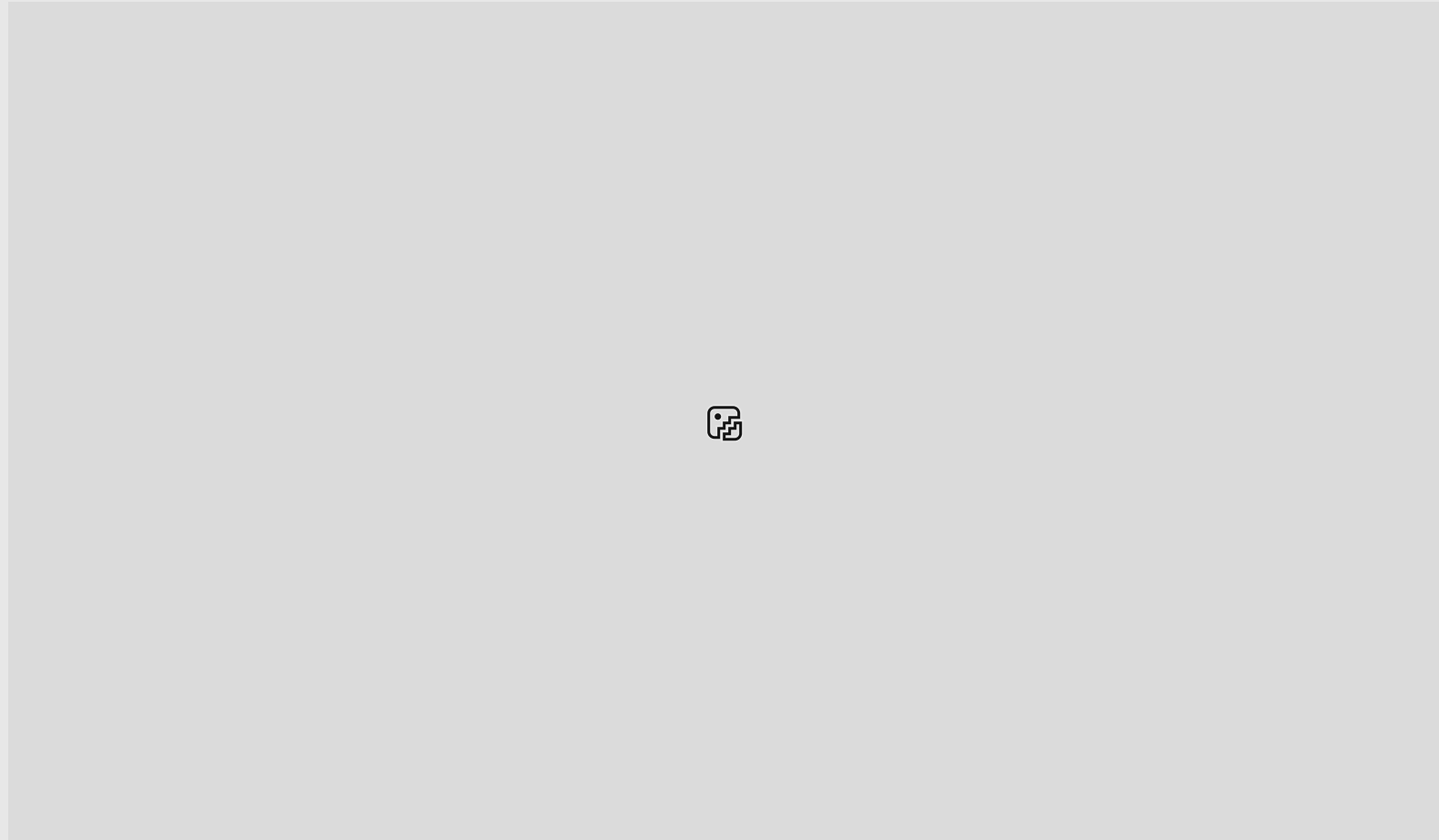
PRESTON 01

Spec Sheet **ASTON LED**

PTN 01

Panel Lights

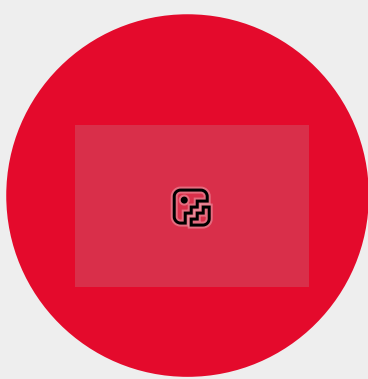
ASTON



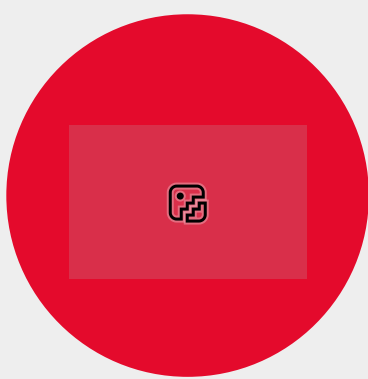
Efficient and uniform lighting for offices and commercial spaces

The **PRESTON 01** LED panel is designed to provide **uniform and comfortable lighting**, making it ideal for offices and commercial environments. With a luminous efficacy of **up to 100 lm/W** and a lifespan of **50,000 hours**, it reduces energy consumption while maintaining high-quality illumination. Its slim design and flexible mounting options allow seamless integration into recessed, suspended, or surface-mounted ceilings.

Applications



Offices and meeting rooms



Hallways and common areas



Schools and classrooms



Shopping malls and retail stores

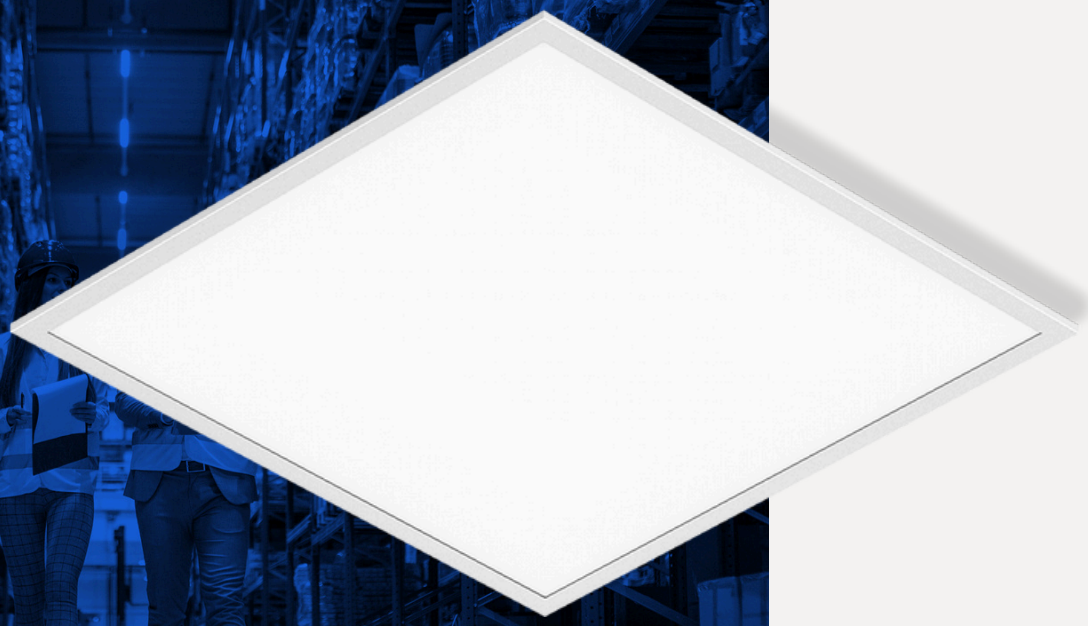


Hospitals and laboratories

Certifications



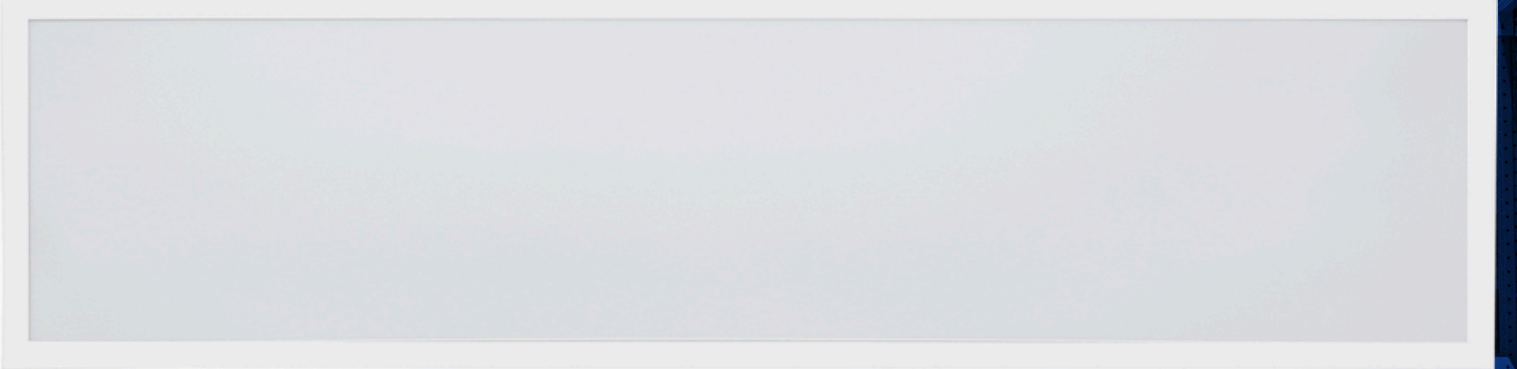
01



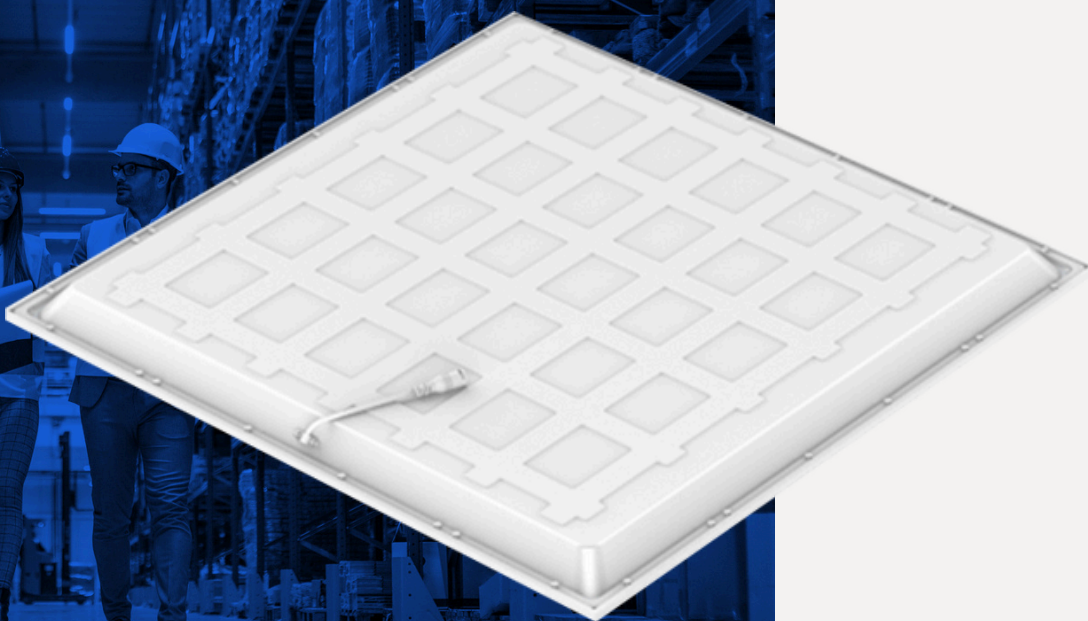
Optimized efficiency: Up to **100 lm/W** for lower energy consumption.

02

Uniform lighting: **3,600 lm to 6,000 lm** luminous flux for greater visual comfort.



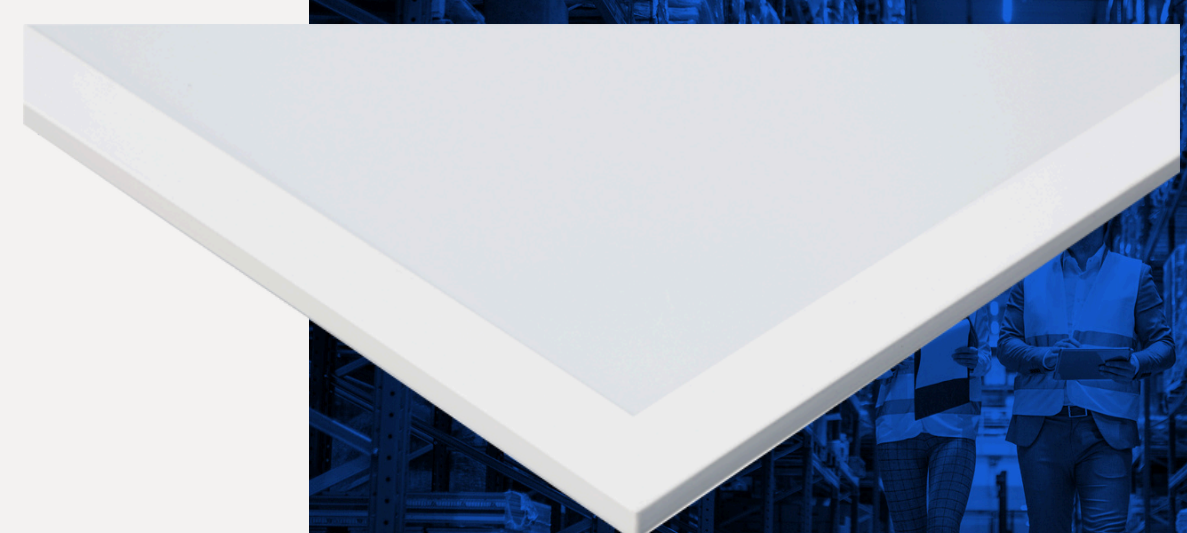
03



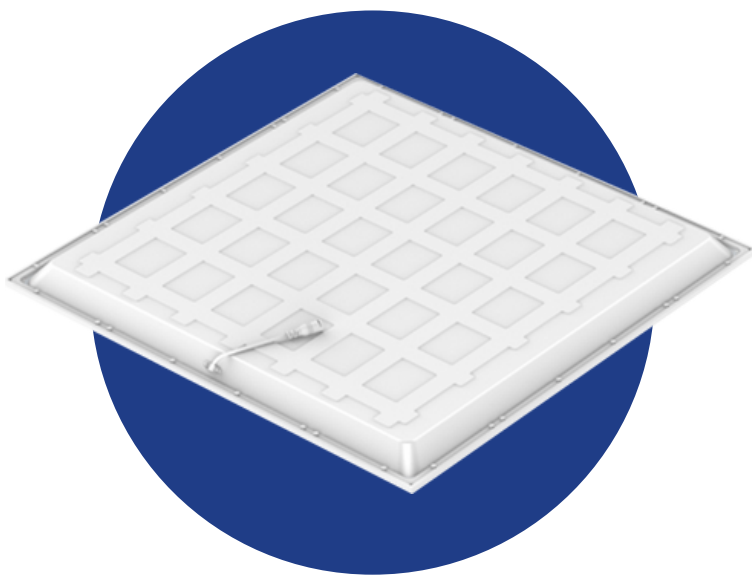
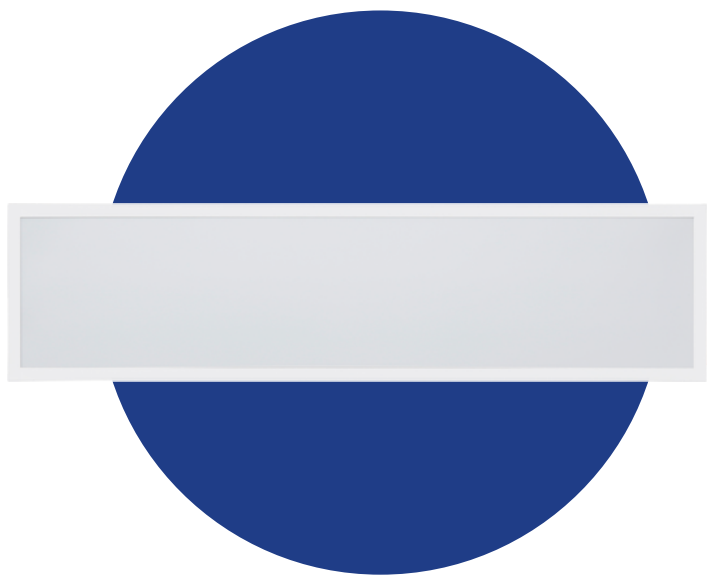
Versatile design: Recessed, suspended, or surface-mounted installation.

04

Long lifespan: **50,000** hours, reducing maintenance costs.



Technical Specifications



Technical Specifications		
Model No.	PTN 01-36	PTN 01-60
Power (W)	36W	60W
Luminous Flux (lm)	3,600 lm	6,000 lm
Luminous Efficacy (lm/W)	100 lm/W	
Correlated Color Temperature (CCT)	4000K (Optional: 3000K, 5000K, 5700K)	
Color Rendering Index (CRI)	≥80	
Input Voltage (V, Hz)	220-240V AC, 50/60 Hz	
Power Factor (PF)	≥0.90	
Dimming	0-10V / DALI / Triac	
Control	-	
IP Rating	IP40 (Non-waterproof) / IP54 (Below ceiling) / IP20 (Inside ceiling)	
IK Rating	-	
Material	Aluminum (Frame), PMMA (Lens), PS (Diffuser)	
Mounting Option	Pendant / Recessed / Surface mounted	
Dimensions (mm)	595 × 595 × 32	595 × 1195 × 32
Weight (kg)	1.56 kg	3.2 kg
Working Temperature (°C)	-10°C to +40°C	
Lifespan (h)	50,000 h	
Warranty	5 years	

ASTON

WWW.ASTONLIGHTING.COM