

WWW.ASTONLIGHTING.COM



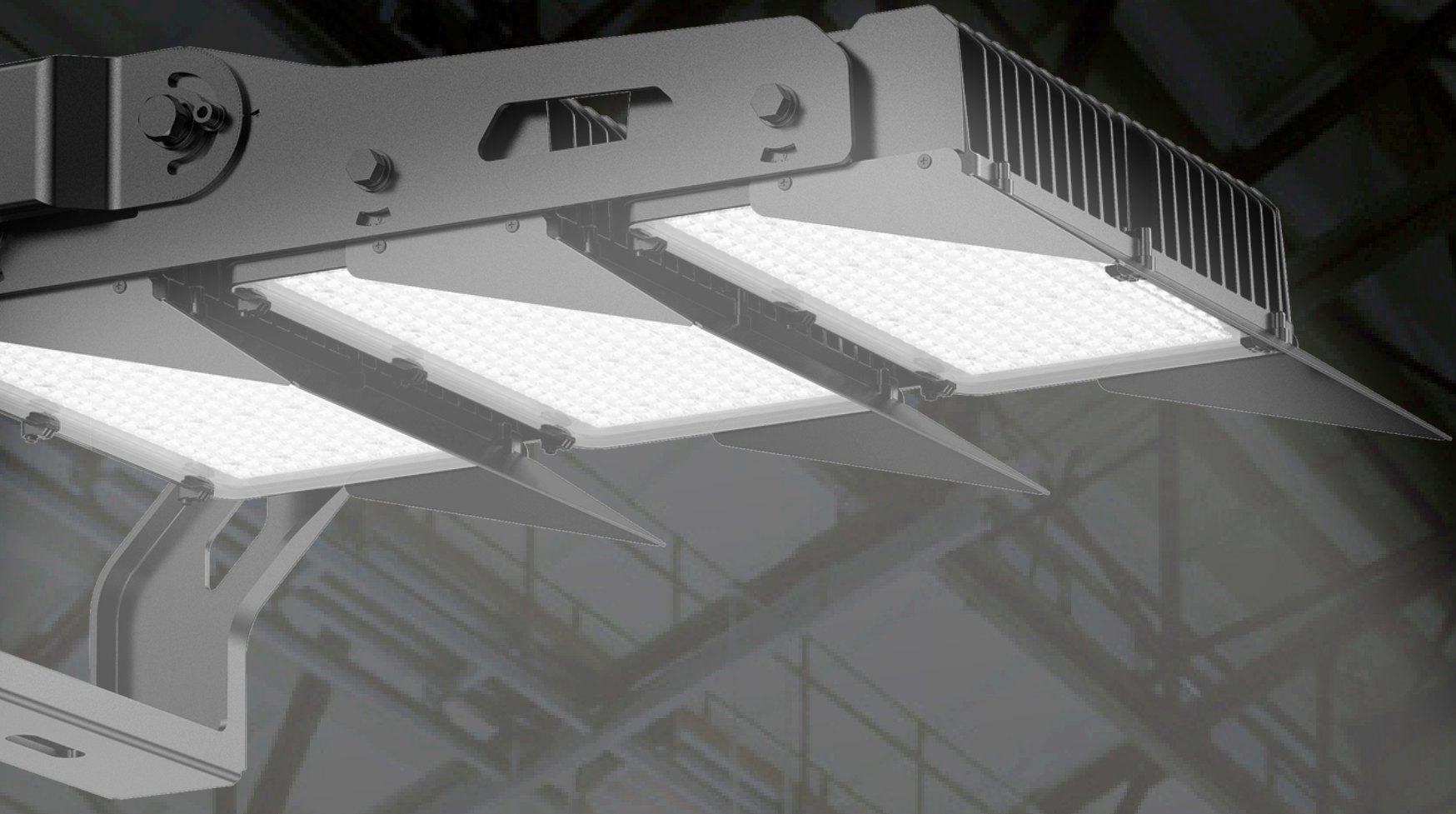
# MANCHESTER 10

Spec Sheet **ASTON LED**

## **MNC 10**

**Floodlights**

**ASTON**



# High-power professional lighting for stadiums and sports venues

The **MANCHESTER 10** LED floodlight is designed to provide **powerful and uniform illumination** in high-level sports environments. With a luminous efficacy of **up to 155 lm/W** and a luminous flux of up to **279,000 lm**, it ensures optimal visibility in stadiums, courts, and sports centers. Its high **color rendering index (CRI ≥70, optional 80-90)** allows excellent color perception for broadcasts and events. Additionally, it features **DALI/DMX** smart control options for advanced lighting management.

## Applications



Stadiums and sports courts



Swimming pools and aquatic centers



Airports and railway stations



Exhibition and event centers

## Certifications

CE CB RoHS SAA 

**01**



**High Efficiency:** Up to **155 lm/W**, ensuring superior brightness with reduced energy consumption.

**02**

**Superior luminous flux:** Up to **279,000 lm** to ensure visibility in large spaces.



**03**



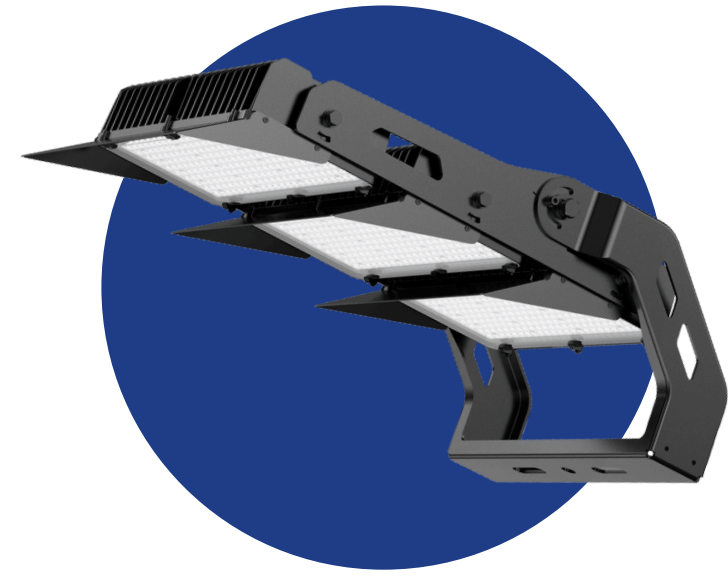
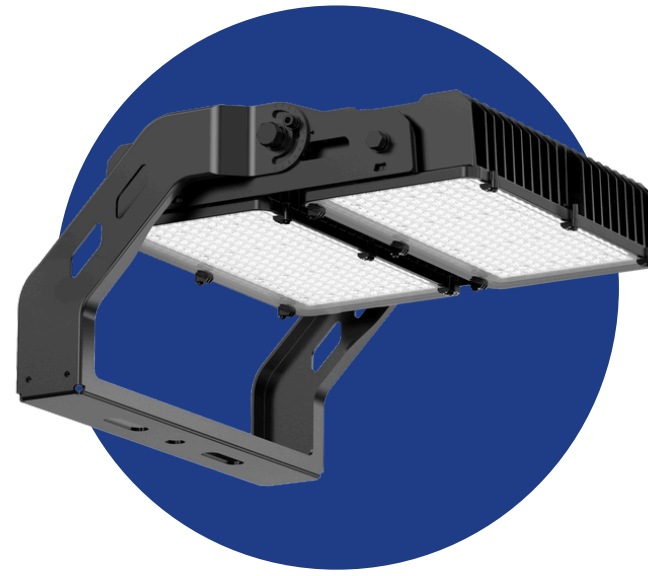
**Optimal color rendering: CRI  $\geq 70$**  (optional 80-90) for natural and accurate lighting.

**Maximum resistance: IP66 and IK08** protection, designed to withstand extreme conditions.

**04**

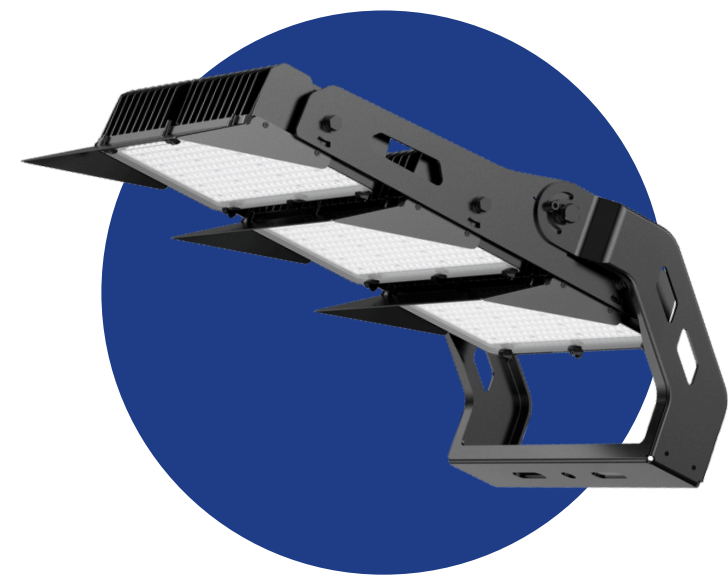
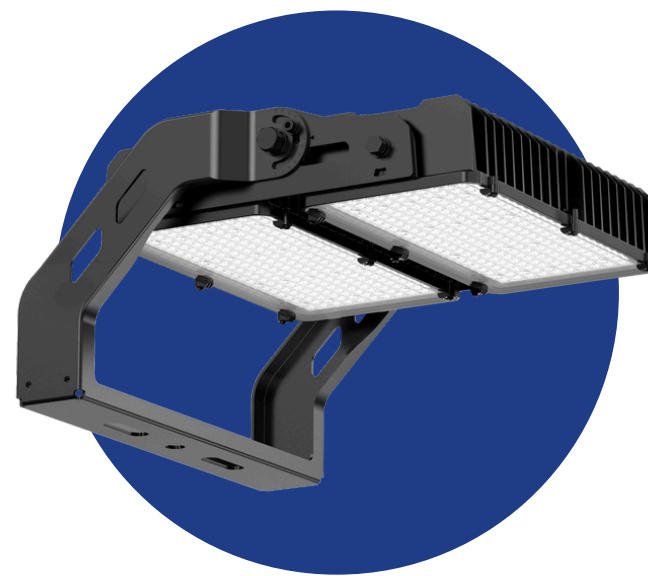


# Technical Specifications



Technical Specifications			
Model No.	MNC 10-400	MNC 10-600	MNC 10-800
<b>Power (W)</b>	400W	600W	800W
<b>Luminous Flux (lm)</b>	54,800 lm (LED 3737) 59,600 lm (LED 5050)	84,000 lm (LED 3737) 93,000 lm (LED 5050)	109,600 lm (LED 3737) 119,200 lm (LED 5050)
<b>Luminous Efficacy (lm/W)</b>	137 lm/W (LED 3737) 149 lm/W (LED 5050)	140 lm/W (LED 3737) 155 lm/W (LED 5050)	137 lm/W (LED 3737) 149 lm/W (LED 5050)
<b>Correlated Color Temperature (CCT)</b>	5700K (Optional: 3000K, 4000K)		
<b>Color Rendering Index (CRI)</b>	≥70 (Optional: 80, 90)		
<b>Input Voltage (V, Hz)</b>	120-240V AC, 50/60 Hz		
<b>Power Factor (PF)</b>	≥0.97		
<b>Dimming</b>	0-10V / DALI / DMX optional		
<b>Control</b>			
<b>IP Rating</b>	IP66		
<b>IK Rating</b>	IK08		
<b>Material</b>	Aluminum alloy (less than 0.01% copper content), polycarbonate optical lens, tempered glass		
<b>Mounting Option</b>	Bracket mounting		
<b>Dimensions (mm)</b>	479 × 224 × 220	479 × 224 × 245	510 × 332 × 368
<b>Weight (kg)</b>	Lamp: 6.3 kg Driver: 3.6 kg	Lamp: 7.8 kg Driver: 4.7 kg	Lamp: 13.7 kg Driver: 5.4 kg
<b>Working Temperature (°C)</b>	-30°C to +40°C (LED 3737) -30°C to +50°C (LED 5050)		
<b>Lifespan (h)</b>	100,000 h (LED 3737) 160,000 h (LED 5050)		
<b>Warranty</b>	5 years		

# Technical Specifications



Technical Specifications			
Model No.	MNC 10-1200	MNC 10-1500	MNC 10-1800
<b>Power (W)</b>	1200W	1500W	1800W
<b>Luminous Flux (lm)</b>	168,000 lm (LED 3737) 186,000 lm (LED 5050)	211,500 lm (LED 3737) 229,500 lm (LED 5050)	252,000 lm (LED 3737) 279,000 lm (LED 5050)
<b>Luminous Efficacy (lm/W)</b>	140 lm/W (LED 3737) 155 lm/W (LED 5050)	141 lm/W (LED 3737) 153 lm/W (LED 5050)	140 lm/W (LED 3737) 155 lm/W (LED 5050)
<b>Correlated Color Temperature (CCT)</b>	5700K (Optional: 3000K, 4000K)		
<b>Color Rendering Index (CRI)</b>	≥70 (Optional: 80, 90)		
<b>Input Voltage (V, Hz)</b>	120-240V AC, 50/60 Hz 220-240V AC, 50/60	200-420V AC, 50/60 Hz	
<b>Power Factor (PF)</b>	≥0.97		
<b>Dimming</b>	0-10V / DALI / DMX optional		
<b>Control</b>			
<b>IP Rating</b>	IP66		
<b>IK Rating</b>	IK08		
<b>Material</b>	Aluminum alloy (less than 0.01% copper content), polycarbonate optical lens, tempered glass		
<b>Mounting Option</b>	Bracket mounting		
<b>Dimensions (mm)</b>	510 × 394 × 496	515 × 444 × 691	515 × 444 × 757
<b>Weight (kg)</b>	Lamp: 18.8 kg Driver: 6.6 kg	Lamp: 24.8 kg Driver: 6.0 kg	Lamp: 28.0 kg Driver: 6.0 kg
<b>Working Temperature (°C)</b>	-30°C to +40°C (LED 3737) -30°C to +50°C (LED 5050)		
<b>Lifespan (h)</b>	100,000 h (LED 3737) 160,000 h (LED 5050)		
<b>Warranty</b>	5 years		

**ASTON**

[WWW.ASTONLIGHTING.COM](http://WWW.ASTONLIGHTING.COM)