

WWW.ASTONLIGHTING.COM



LONDON 10

Spec Sheet **ASTON LED**

LDN 10

High Bay Lighting

ASTON

Power and Versatility in Industrial Lighting

London 10 is a next-generation industrial luminaire that combines **high luminous efficiency of up to 200 lm/W** with a robust and adaptable design. Its **standard Zhaga receptacle** allows seamless integration with smart control solutions, optimizing energy consumption. Featuring selectable wattage options (**100 W, 150 W, 200 W, and 240 W**) and beam angles of **60°, 85°, and 115°**, it delivers flexible lighting for various environments. Additionally, its **IP66 and IK08** durability ensures optimal performance in demanding conditions, while its compact structure simplifies installation in multiple configurations.

Applications



Warehouses and logistics centers



Factories and industrial facilities



Shopping centers and high-traffic areas

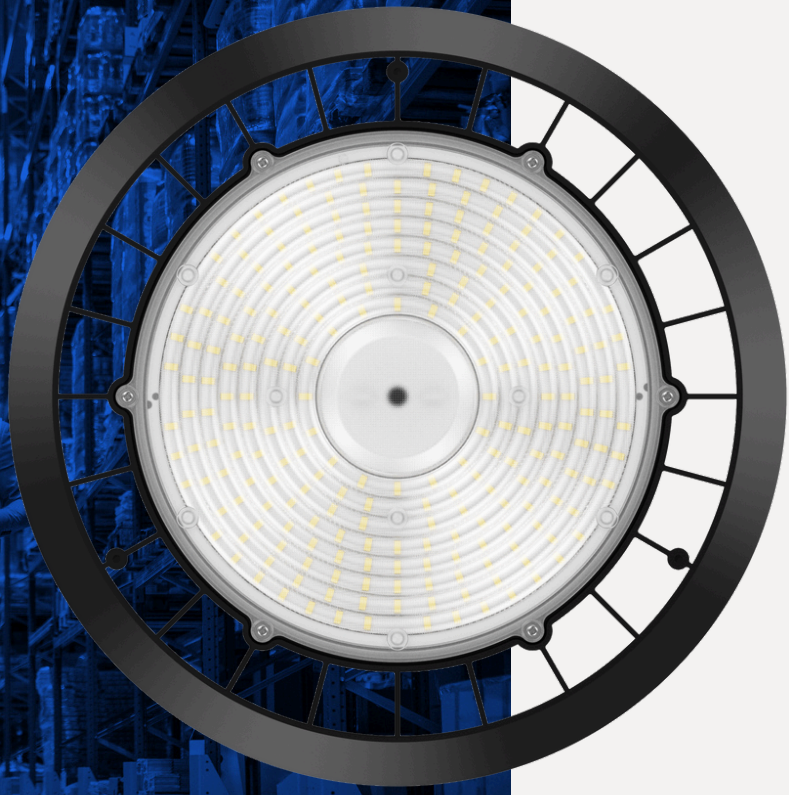


Exhibition centers

Certifications

CB CE  RoHS

01



Maximum luminous efficiency: Up to **200 lm/W**, optimizing energy consumption.

02

Optional smart sensors: Compatible with **PIR and microwave** for automatic lighting control.



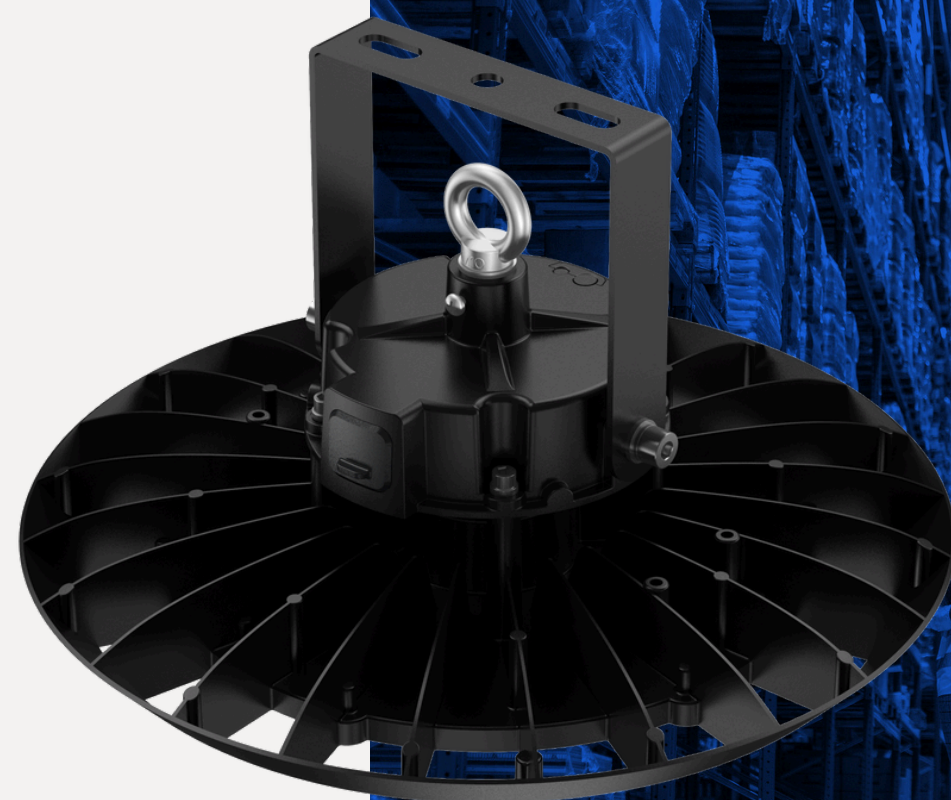
03



Versatile color temperature options: Standard 5000K, with 3000K and 6500K available.

High durability: **IP65 and IK08** protection, ideal for industrial and commercial use.

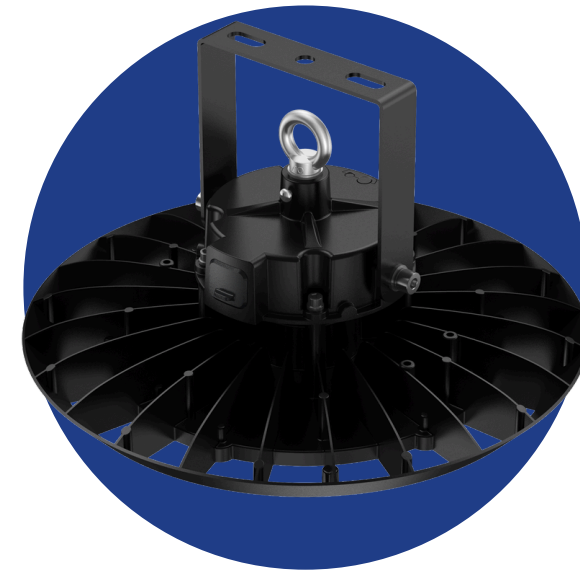
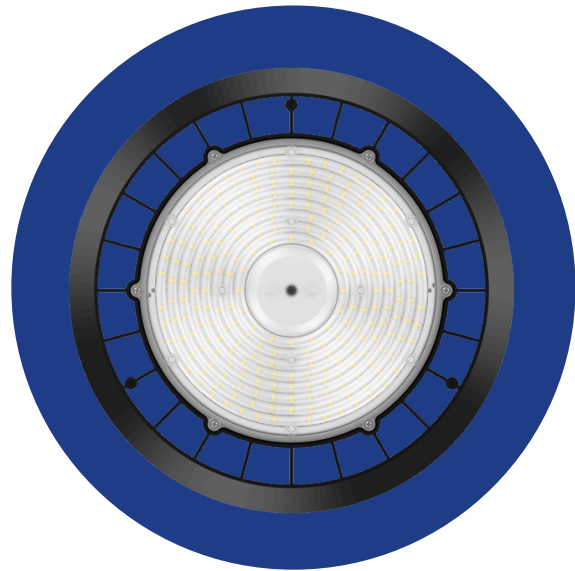
04



LONDON 10 - LDN 10

Technical Specifications

ASTON



Technical Specifications				
Model No.	LDN 10 - 100	LDN 10 - 150	LDN 10 - 200	LDN 10 - 240
Power (W)	100W (Selectable: 80W, 60W)	150W (Selectable: 120W, 90W)	200W (Selectable: 160W, 120W)	240W (Selectable: 190W, 145W)
Luminous Flux (lm)	20,000 lm (Ra70) 16,000 lm (Ra80)	30,000 lm (Ra70) 24,000 lm (Ra80)	40,000 lm (Ra70) 32,000 lm (Ra80)	46,800 lm (Ra70) 38,400 lm (Ra80)
Luminous Efficacy (lm/W)	200 lm/W (Ra70) / 160 lm/W (Ra80)			
Correlated Color Temperature (CCT)	5000K (Optional: 3000K, 6500K)			
Color Rendering Index (CRI)	≥70 (Optional: 80)			
Input Voltage (V, Hz)	120-277 V AC, 50/60 Hz			
Power Factor (PF)	≥0.92			
Dimming	0-10V			
Control	Microwave motion sensor, PIR sensor, Zhaga receptacle			
IP Rating	IP65			
IK Rating	IK08			
Material	Aluminum alloy, polycarbonate optical lens			
Mounting Option	Loop hanging / Ceiling mounting			
Dimensions (mm)	Ø273 × 170	Ø300 × 173	Ø330 × 176	Ø355 × 181
Weight (kg)	1.8 kg	2.0 kg	2.3 kg	2.6 kg
Working Temperature (°C)	-30°C to +50°C			
Lifespan (h)	160,000 h			
Warranty	5 years			

ASTON

WWW.ASTONLIGHTING.COM