

WWW.ASTONLIGHTING.COM



# LIVERPOOL 10

Spec Sheet **ASTON LED**

# LVP 10

Linear Lighting

**ASTON** PRO



# Smart Industrial Lighting with **Real-Time Energy Management**

Liverpool 10 is a high-performance industrial LED luminaire designed to enhance energy efficiency and lighting control in demanding environments. With an efficacy of **130 lm/W**, it provides uniform and bright illumination while minimizing operational costs. Its intelligent control capabilities, compatible with **PIR and Microwave Plug & Play sensors** and platforms like **Spark**, enable real-time adjustments and optimized energy consumption. Built with a robust polycarbonate body and **IP65 and IK08 ratings**, Liverpool 10 withstands harsh industrial conditions.

## Applications



Warehouses



Factories



Industrial facilities



Parking lots  
(underground and  
multi-level)



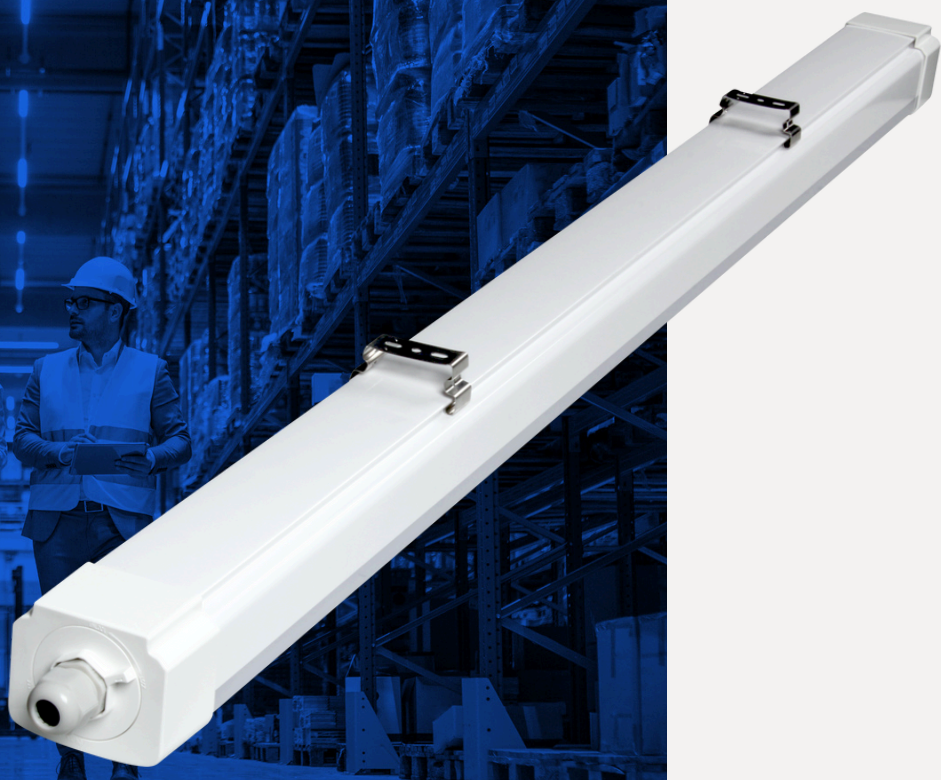
Logistics and  
transport  
terminals

## Certifications

**CE RoHS**



**01**



**Intelligent Lighting Control:** Compatible with **Spark** for real-time configuration and energy consumption optimization.

**02**

**Integrated Sensors:** Equipped with **PIR and microwave motion sensors** for automated lighting adjustments.



**03**



**Robust Design:** Polycarbonate body with **IP65 and IK08** protection ratings for harsh environments.

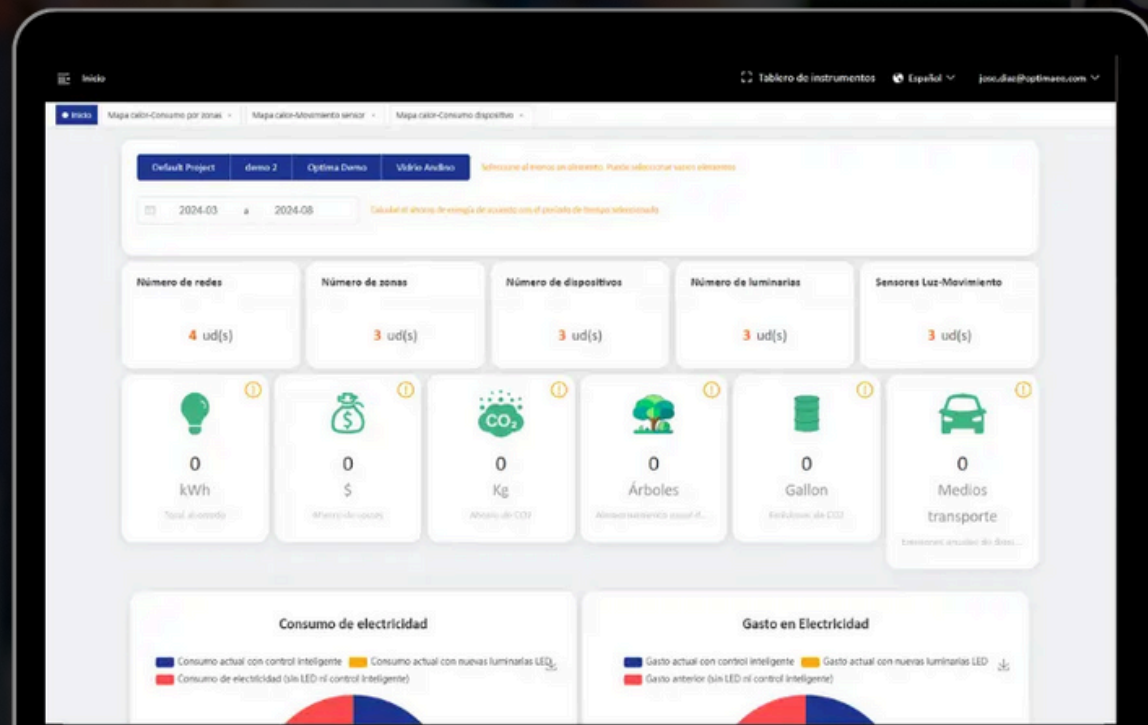
**04**

**High Luminous Efficacy:** Provides bright and uniform illumination with various wattage and size options.





# Liverpool 10 + Spark: Smart Lighting for Efficient Management



Liverpool 10 is not just a high-performance industrial luminaire; when integrated with **Spark**, it becomes a **smart solution** that optimizes energy management and lighting control in real-time. With Spark, each luminaire can be monitored, adjusted, and scheduled to maximize efficiency and reduce operating costs.

## Key Benefits



### Total Lighting Control

Adjust Liverpool 10 brightness remotely in real-time.



### Wireless Mesh Network

Bluetooth Mesh reduces wiring and installation costs.



### Smart Energy Savings

Spark minimizes energy waste in low-occupancy areas.



### Automation & Sensors

Plug & Play PIR & Microwave sensors adjust lighting.



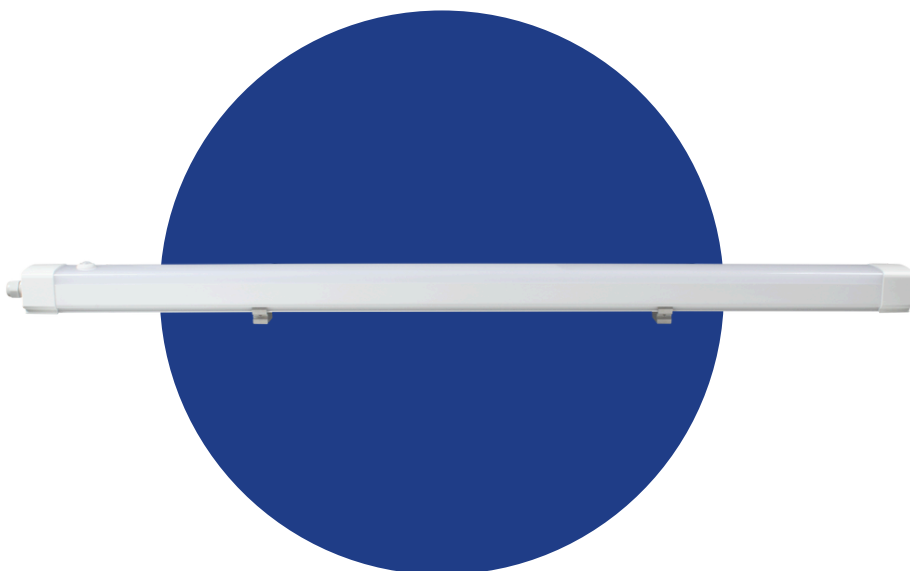
### Centralized Management

Control all warehouse and logistics lighting from one platform.

The integration of Liverpool 10 with Spark enables **more efficient, automated, and easy-to-manage** industrial lighting. Transform your lighting system into a **smart and sustainable solution**.



# Technical Specifications



Technical Specifications		
Model No.	LVP 10 - 38	LVP 10 - 50
Power (W)	38W	50W
Luminous Flux (lm)	5,000 – 5,500 lm	6,500 lm
Luminous Efficacy (lm/W)	130 lm/W	
Correlated Color Temperature (CCT)	5000K	
Color Rendering Index (CRI)	≥80	
Input Voltage (V, Hz)	220-240 V AC, 50/60 Hz (Optional: 100-277 V AC)	
Power Factor (PF)	≥0.95	
Dimming	0-10V	
Control	PIR sensor (compatible with energy management platforms like Spark)	
IP Rating	IP65	
IK Rating	IK08	
Material	Polycarbonate	
Mounting Option	Surface mount / Pendant	
Dimensions (mm)	1200 × 74 × 63	1500 × 74 × 63
Weight (kg)	1.7 kg	
Working Temperature (°C)	-20°C to +40°C	2.1 kg
Lifespan (h)	125,000 h	
Warranty	5 years	





[WWW.ASTONLIGHTING.COM](http://WWW.ASTONLIGHTING.COM)