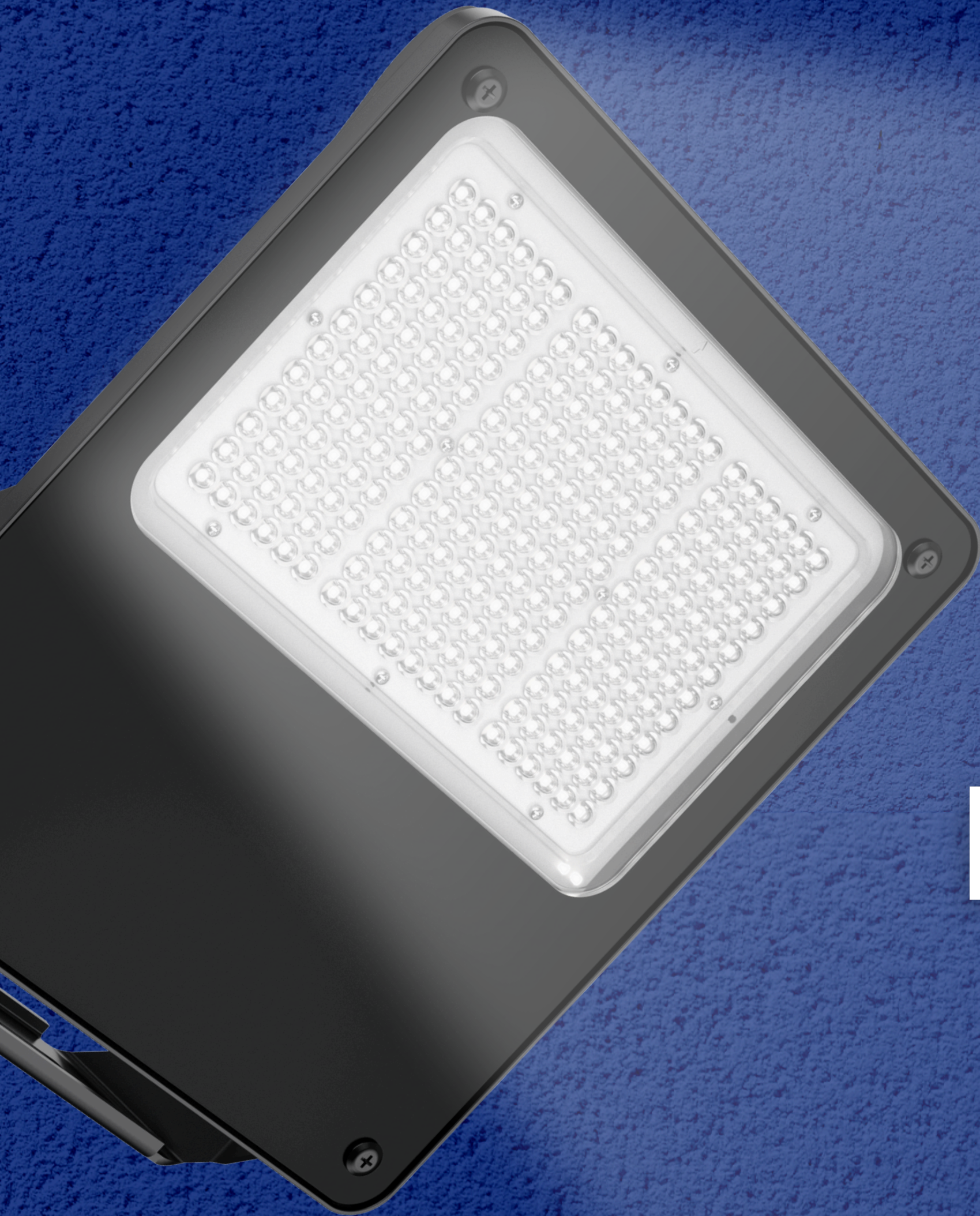


WWW.ASTONLIGHTING.COM



KENT 15

Spec Sheet **ASTON LED**

KNT 15

Floodlights

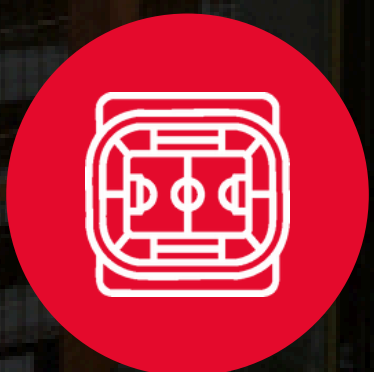
ASTON



High-Performance LED Floodlight for Large-Scale Applications

The **KENT 15** is a high-performance **LED floodlight** designed for demanding outdoor and industrial applications. With an efficacy of **150 lm/W**, it delivers superior brightness while maximizing energy efficiency. Its **robust aluminum and polycarbonate construction** ensures durability, and its **IP66 and IK08** ratings provide excellent protection against dust, water, and impacts. Available in multiple power options (50W to 300W), the KENT 15 adapts to various lighting needs, from sports fields to large parking areas. It supports **bracket, ceiling, wall, and pole mounting**, offering flexibility for different installation requirements. Additionally, it features **dimming options and compatibility with PIR and microwave sensors** for smart lighting control.

Applications



Recreational sports



Exhibition centers and shopping malls



Large parking lots and outdoor plazas



Industrial areas and logistics hubs



Airports and railway stations

Certifications

CE RoHS 

01



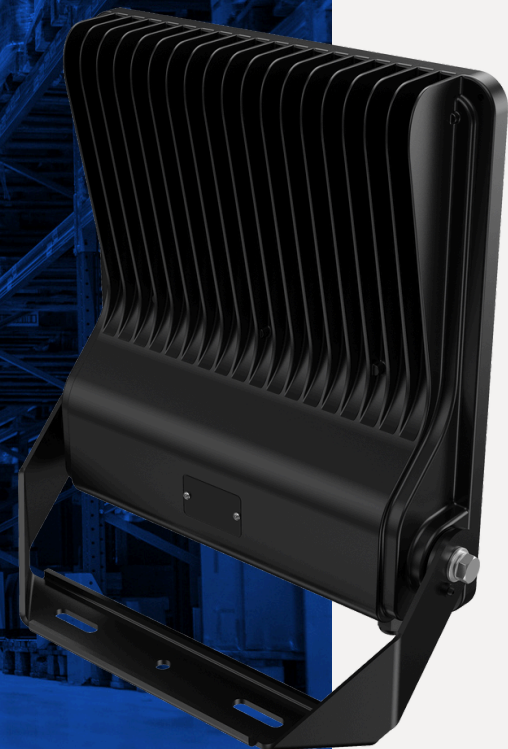
High Luminous Efficiency: Up to 150 lm/W, ensuring powerful and energy-efficient lighting.

Robust and Weather-Resistant Design: IP66 and IK08 ratings for high durability in harsh environments.



02

03



Versatile Mounting Options: Suitable for wall, ceiling, pole, and bracket installations.

Smart Control Integration: Supports PIR and microwave sensors, enabling automated lighting management.

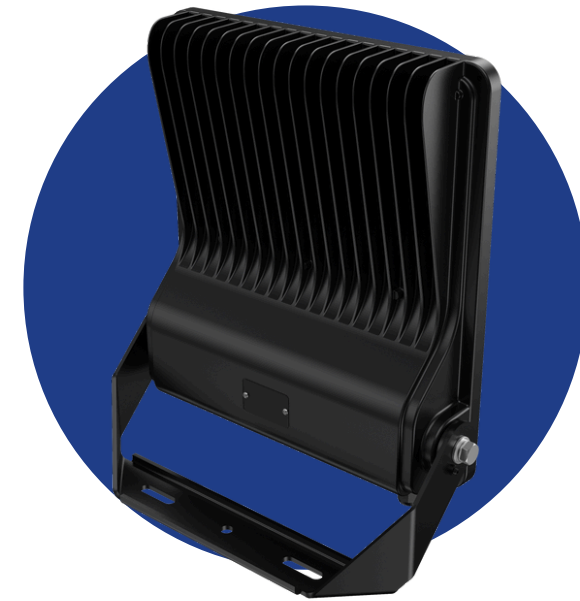
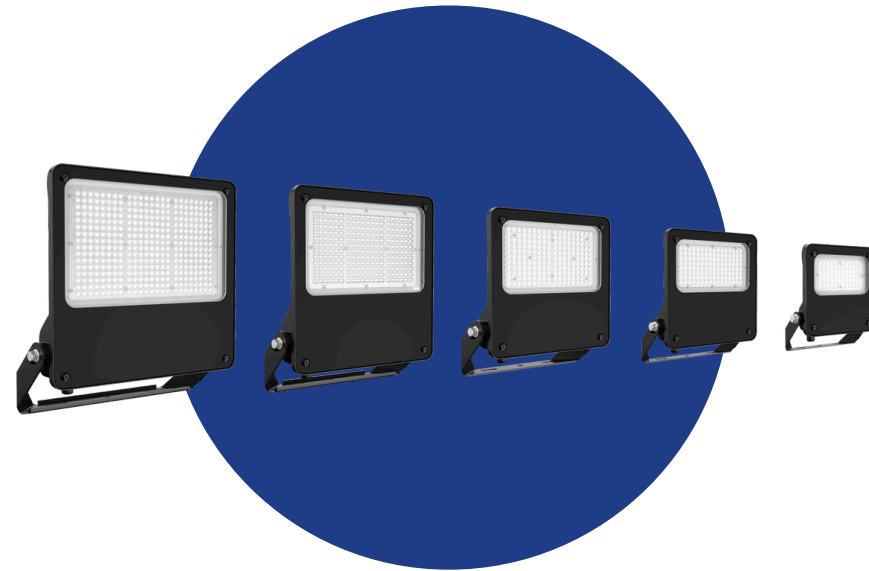


04

KENT 15 - KNT 15



Technical Specifications



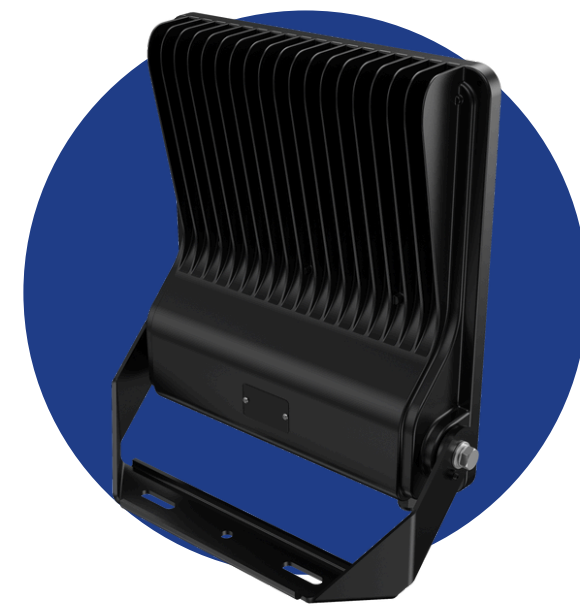
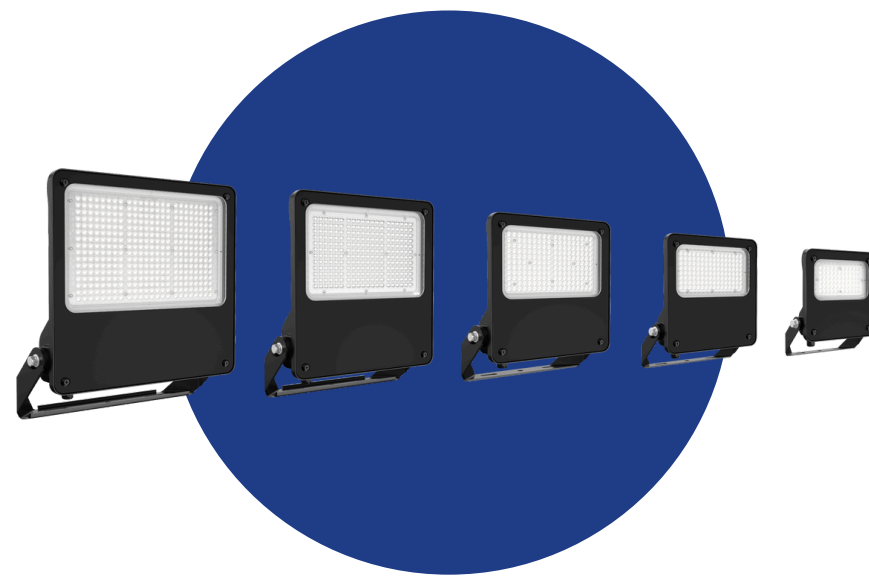
Technical Specifications

Model No.	KNT 15-50	KNT 15-100	KNT 15-150
Power (W)	50W	100W	150W
Luminous Flux (lm)	7,500 lm	15,000 lm	22,500 lm
Luminous Efficacy (lm/W)	150 lm/W		
Correlated Color Temperature (CCT)	5000K (Optional: 3000K, 4000K)		
Color Rendering Index (CRI)	≥70 (Optional: 80)		
Input Voltage (V, Hz)	220-240 V AC, 50/60 Hz		
Power Factor (PF)	≥0.95		
Dimming	Yes		
Control	PIR Sensor, Microwave Sensor		
IP Rating	IP66		
IK Rating	IK08		
Material	Aluminum alloy, Steel plate, Polycarbonate optical lens, Glass		
Mounting Option	Bracket Mounting / Pole Mounting		
Dimensions (mm)	292 × 245 × 55	353 × 287 × 65	392 × 319 × 70
Weight (kg)	1.9 kg	2.8 kg	3.9 kg
Working Temperature (°C)	-30°C to +45°C		
Lifespan (h)	170,000 h		
Warranty	5 years		

KENT 15 - KNT 15



Technical Specifications



Technical Specifications		
Model No.	KNT 15-200	KNT 15-300
Power (W)	200W	300W
Luminous Flux (lm)	30,000 lm	45,000 lm
Luminous Efficacy (lm/W)	150 lm/W	
Correlated Color Temperature (CCT)	5000K (Optional: 3000K, 4000K)	
Color Rendering Index (CRI)	≥70 (Optional: 80)	
Input Voltage (V, Hz)	220-240 V AC, 50/60 Hz	
Power Factor (PF)	≥0.95	
Dimming	Yes	
Control	PIR Sensor, Microwave Sensor	
IP Rating	IP66	
IK Rating	IK08	
Material	Aluminum alloy, Steel plate, Polycarbonate optical lens, Glass	
Mounting Option	Bracket Mounting / Pole Mounting	
Dimensions (mm)	447 × 359 × 75	495 × 419 × 75
Weight (kg)	5.2 kg	6.4 kg
Working Temperature (°C)	-30°C to +45°C	
Lifespan (h)	170,000 h	
Warranty	5 years	

ASTON

WWW.ASTONLIGHTING.COM