

WWW.ASTONLIGHTING.COM



KENT 10

Spec Sheet **ASTON LED**

KNT 10

Floodlights

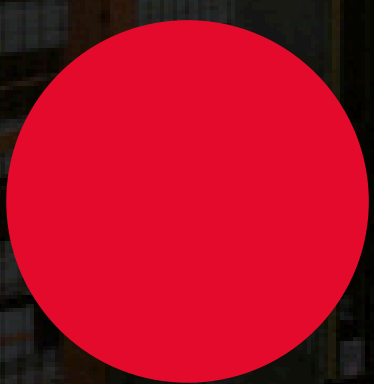
ASTON

The logo for ASTON, featuring the word "ASTON" in a bold, white, sans-serif font. The letter "O" is stylized with a circular icon inside it. The background of the entire page is a dark, industrial setting with a complex metal structure, possibly a warehouse or factory interior.

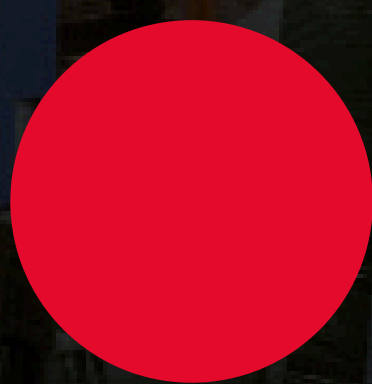
High-Power and High-Efficiency LED Floodlight

The KENT 10 is a **high-power, high-efficiency LED floodlight**, designed for industrial and commercial applications that require **powerful and uniform lighting**. With a **luminous efficacy of 150 lm/W**, this model provides high energy performance, optimizing operational costs. Its aluminum alloy and tempered glass construction ensure durability and resistance, with an **IP66 and IK08 rating** to withstand harsh conditions. Available in wattages from 50W to 300W, it offers multiple mounting options to suit various applications.

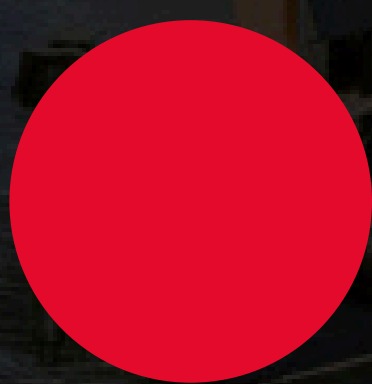
Applications



Warehouses



Factories



Industrial facilities



Exhibition centers



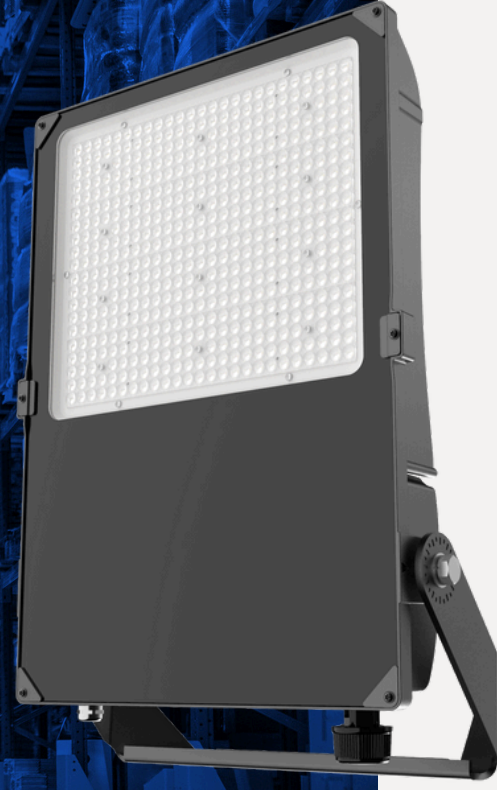
Stadiums

Certifications

CE RoHS



01

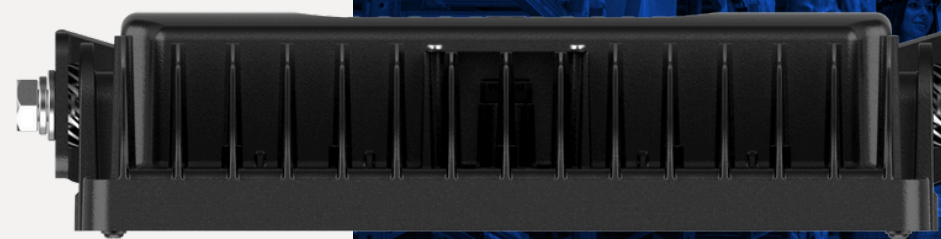


High Luminous Efficiency
Up to 150 lm/W, maximizing energy performance.

Robust Construction

Aluminum alloy body and tempered glass lens with IP66 and IK08 ratings.

02



03



Versatile Mounting Options
Compatible with ceiling, wall, pole, and adjustable bracket mounting.

Optional Dimmable Control

Available with 1-10V Dimmable control for energy optimization.

04



KENT 10 - KNT 10



Technical Specifications

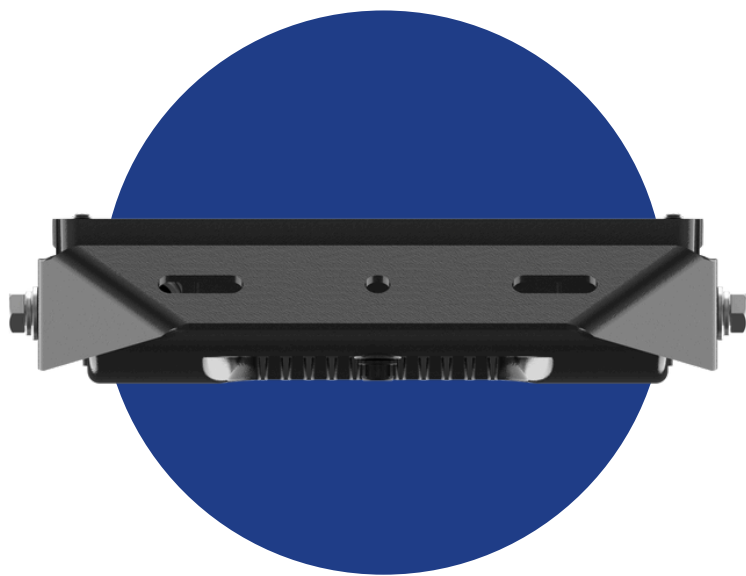


Technical Specifications			
Model No.	KNT 10 - 50	KNT 10 - 100	KNT 10 - 150
Power (W)	50W	100W	150W
Luminous Flux (lm)	7,500 lm	15,000 lm	22,500 lm
Luminous Efficacy (lm/W)	150 lm/W		
Correlated Color Temperature (CCT)	4000K (Optional: 3000K, 5000K)		
Color Rendering Index (CRI)	≥70 (Optional: 80)		
Input Voltage (V, Hz)	220-240 V AC, 50/60 Hz		
Power Factor (PF)	≥0.90	≥0.95	
Dimming	Yes (Optional) 1-10V		
Control	1-10V dimmable		
IP Rating	IP66		
IK Rating	IK08		
Material	Aluminum Alloy, Tempered glass, Polycarbonate optical lens		
Mounting Option	Bracket Mounting / Pole Mounting		
Dimensions (mm)	267 × 228 × 55	314 × 269 × 61	360 × 302 × 67
Weight (kg)	1.8 kg	2.8 kg	3.9 kg
Working Temperature (°C)	-30°C to +50°C		
Lifespan (h)	125,000 h		
Warranty	5 years		

KENT 10 - KNT 10



Technical Specifications



Technical Specifications		
Model No.	KNT 10 - 200	KNT 10 - 300
Power (W)	200W	300W
Luminous Flux (lm)	30,000 lm	45,000 lm
Luminous Efficacy (lm/W)	150 lm/W	
Correlated Color Temperature (CCT)	4000K (Optional: 3000K, 5000K)	
Color Rendering Index (CRI)	≥70 (Optional: 80)	
Input Voltage (V, Hz)	220-240 V AC, 50/60 Hz	
Power Factor (PF)	≥0.95	
Dimming	Yes (Optional) 1-10V	
Control	1-10V dimmable	
IP Rating	IP66	
IK Rating	IK08	
Material	Aluminum Alloy, Tempered glass, Polycarbonate optical lens	
Mounting Option	Bracket Mounting / Pole Mounting	
Dimensions (mm)	398 × 343 × 70	470 × 406 × 80
Weight (kg)	5.3 kg	8.1 kg
Working Temperature (°C)	-30°C to +50°C	
Lifespan (h)	125,000 h	
Warranty	5 years	

ASTON

WWW.ASTONLIGHTING.COM