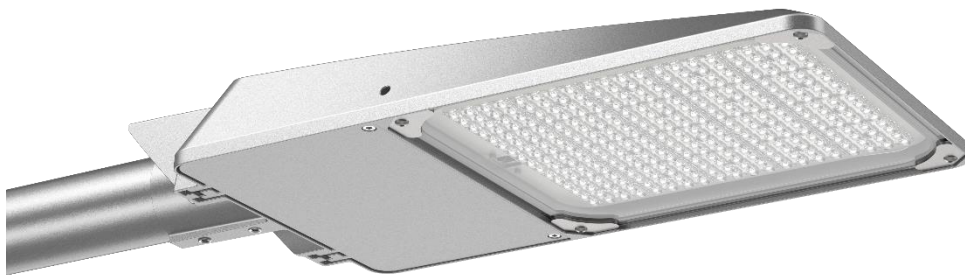




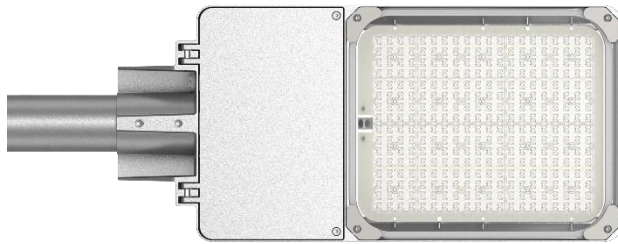
26 COWPER STREET, FIRST FLOOR,  
LONDON. UNITED KINGDOM  
EC2A 4AP

# Spec Sheet ASTON LED Sutton Street Light

STN04



# Introduction



STN04 is a high-quality LED Street Light with high luminous efficacy (140lm/W). With a smaller size and reliable and robust housing structure: IP66, IK09 and 10 kV surge protection, that maximizes the endurance and contributes to its long lifetime. With its flexible installation accessories, it can be used in a wide variety of applications. Slim designed is an excellent choice for new construction or retrofit application. The High output LED and 30W-200W makes the power as a whole series.

## Key Features

1. LED service life: 131,000 hours @L70-30°C.
2. 5-years warranty.
3. Excellent Heat Dissipation which ensures longer lifespan
4. Tool-free Open and Maintenance
5. IP rating: IP66 | IK rating: IK09
6. Multiple mounting options.
7. Super high efficacy up to 140 lm/w.
8. Photocell compatible
9. Housing is made of 100% aluminum alloy (ADC12) - Powder coating with strong anti-corrosion
10. Power-off protection and surge protection

## Applications

- Distribution centers
- Traffic Routes
- Brand roads
- Residential area
- Parking lot areas
- Other heavy dust area

## Certifications



## Technical Specifications

<b>Model No.</b>	STN04-20	STN04-40	STN04-100	STN04-120	STN04-150	STN04-180	STN04-200
<b>Power Consumption</b>	20w	40w	100w	120w	150w	180w	200w
<b>LED Type</b>	LED 3030						
<b>Luminous Flux (± 5%)</b>	2,800 lm	5,600 lm	14,000 lm	16,800 lm	21,000 lm	25,200 lm	28,000 lm
<b>Efficacy (5000K, Ra70)</b>	140 lm/w ± 5%						
<b>CCT</b>	4000 K (5000 K optional)						
<b>CRI</b>	RA70 (RA80 optional)						
<b>Driver</b>	SOSEN						
<b>Input Voltage</b>	100-240 VAC   50-60 Hz						
<b>Power Factor</b>	≥ 0.9						
<b>Insulation Type</b>	Class I						
<b>Surge protection</b>	6kV line-line, 10kV line-ground						
<b>Product Dimension</b>	605*270*165mm		710*270*165mm		770*270*165mm		840*335*165mm
<b>Luminaire Net Weight</b>	4.7±0.3kg		5.9±0.3kg		7.2±0.3kg		8.5±0.3kg
<b>Material</b>	Tempered Glass+Polycarbonate Optical Lens						
<b>Mounting Option</b>	Spigot (Adjustable Angle)/Pole Mounting / Wall Mounting						
<b>Operating Temperature</b>	-30°C to 50°C						
<b>Life Time</b>	> 131,000 Hrs						
<b>Dimmable</b>	1-10V Dimmable and Non-dimmable						
<b>Intelligent Control</b>	Photocell, DALI, Timer control and Solar options						
<b>IP Rating</b>	IP66						
<b>Warranty</b>	5 years						
<b>Certifications</b>	CE, CB, ROHS, EMC						